



Transformative Hardscapes Begin Here.
Discover The Power of MiriPave®.

12 INCH THREE PIECE SYSTEM



Innovative Concrete Solutions For Inspired Spaces™

In the ever-evolving field of landscape architecture and civil engineering, innovative, durable, and aesthetically versatile solutions are paramount. Austin Block + Hardscape proudly presents MiriPave®, a premier hardscape paver solution engineered to meet the rigorous demands of today's complex projects. Designed with precision and crafted for excellence, MiriPave® offers unmatched performance and versatility, setting a new standard in the industry.

MiriPave® by Austin Block + Hardscape is not just a product but a comprehensive solution tailored for professionals who demand excellence in every project. Discover how MiriPave® can transform your designs with unparalleled durability, aesthetic versatility, and sustainable benefits.

Key Benefits of MiriPave® Concrete Pavers Over Other Substrates

ENHANCED DURABILITY AND LOAD-BEARING CAPACITY

MiriPave® concrete pavers are designed to withstand significant loads, making them ideal for high-traffic areas such as commercial plazas, pedestrian walkways, and vehicular pathways like residential driveways. Unlike asphalt or crushed stone, these pavers maintain structural integrity under heavy use and adverse weather conditions, ensuring long-lasting performance.

SUPERIOR AESTHETIC FLEXIBILITY

Available in a diverse range of colors, textures, and finishes, MiriPave® allows for creative freedom in design, enabling professionals to achieve unique and visually appealing landscapes. This versatility surpasses the limitations of traditional materials like asphalt or clay pavers, providing endless possibilities for customization and innovation.

[CONTINUE TO NEXT PAGE](#)



**Austin Block
+ Hardscape®**

7531 North IH-35 | Georgetown, Texas 78626
CALL US: (512) 930-1398 **EMAIL US:** sales@ausbh.com

ausbh.com

Revised May 28, 2024 | Page 1 of 3



Transformative Hardscapes Begin Here. Discover The Power of MiriPave®.

12 INCH THREE PIECE SYSTEM

Key Benefits of MiriPave® Concrete Pavers Over Other Substrates CONTINUED...

ECO-FRIENDLY AND SUSTAINABLE

MiriPave® pavers are an environmentally responsible choice, often incorporating recycled materials and offering excellent permeability. This permeability reduces surface runoff, promoting groundwater recharge and mitigating urban heat island effects. These features position MiriPave® as a superior alternative to non-permeable substrates like concrete and asphalt.

EASE OF MAINTENANCE AND REPAIR

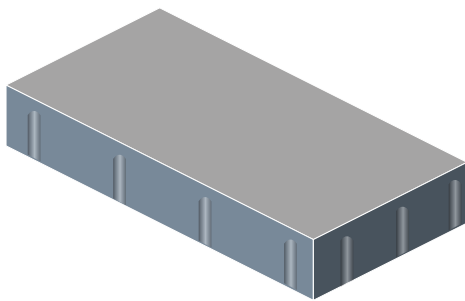
One of the significant advantages of MiriPave® concrete pavers is their ease of maintenance. Individual pavers can be replaced without disturbing the surrounding areas, unlike continuous surfaces like concrete or asphalt. This modularity ensures minimal downtime and cost-effective repairs, enhancing the long-term value for clients and projects.

RESILIENCE AGAINST ENVIRONMENTAL STRESS

Concrete pavers, including MiriPave®, exhibit excellent resistance to freeze-thaw cycles and thermal expansion. This resilience is advantageous in varying climates, where materials like clay pavers or gravel may succumb to weather-induced deterioration. MiriPave® maintains its structural and aesthetic integrity, ensuring reliable performance year-round.

12 INCH THREE PIECE SYSTEM

SPECIFICATION



Three piece slab system with 2MM micro-chamfer and 2MM hidden spacer lugs on 75MM center-to-center spacing.

DIMENSIONS	12 x 6 x 2.36 Inch
PALLET CONFIGURATION	9 Layers of 19 Pieces
AREA PER UNIT	.5/SF
AREA PER LAYER	3.5/SF
AREA PER PALLET	126/SF
UNITS PER PALLET	63 Pieces
WEIGHT PER UNIT	13.2 lbs.
WEIGHT PER LAYER	92 lbs.
WEIGHT PER PALLET	3,360 lbs. Total Weight

RECOMMENDED INSTALLATION APPLICATION

Our three piece slab system excels in paving and pedestrian applications, perfect for landscape architects, designers, civil engineers, and pool builders. Whether for sidewalks, patios, outdoor living spaces, light vehicular traffic, or pool decks, our pavers offer durability and aesthetic appeal. With their versatility and high quality, you can create visually stunning and functional outdoor areas, ensuring your designs leave a lasting impression on clients.

[CONTINUE TO NEXT PAGE](#)



**Austin Block
+ Hardscape®**

7531 North IH-35 | Georgetown, Texas 78626
CALL US: (512) 930-1398 **EMAIL US:** sales@ausbh.com

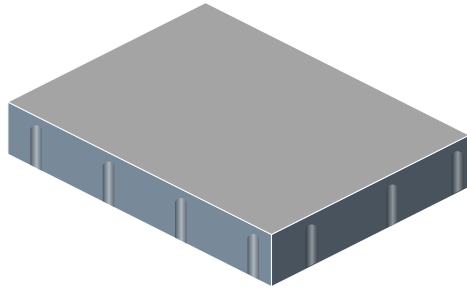
ausbh.com



Transformative Hardscapes Begin Here. Discover The Power of MiriPave®.

12 INCH THREE PIECE SYSTEM

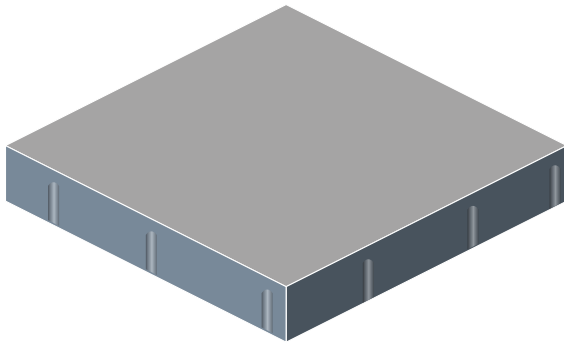
SPECIFICATION



Three piece slab system with 2MM micro-chamfer and 2MM hidden spacer lugs on 75MM center-to-center spacing.

DIMENSIONS	12 x 9 x 2.36 Inch
PALLET CONFIGURATION	9 Layers of 19 Pieces
AREA PER UNIT	.75/SF
AREA PER LAYER	4.5/SF
AREA PER PALLET	126/SF
UNITS PER PALLET	54 Pieces
WEIGHT PER UNIT	19.9 lbs.
WEIGHT PER LAYER	119 lbs.
WEIGHT PER PALLET	3,360 lbs. Total Weight

SPECIFICATION



Three piece slab system with 2MM micro-chamfer and 2MM hidden spacer lugs on 75MM center-to-center spacing.

DIMENSIONS	12 x 12 x 2.36 Inch
PALLET CONFIGURATION	9 Layers of 19 Pieces
AREA PER UNIT	1/SF
AREA PER LAYER	6/SF
AREA PER PALLET	126/SF
UNITS PER PALLET	54 Pieces
WEIGHT PER UNIT	26.4 lbs.
WEIGHT PER LAYER	158 lbs.
WEIGHT PER PALLET	3,360 lbs. Total Weight

AVAILABLE TEXTURES

Calle
Paseo

AVAILABLE FINISHES

Smooth
ShotBlast
Antique

AVAILABLE COLORS

Austin Limestone	Moonlight Blend
Charcoal	Pewter
Cream	Sandstone
Crestwood Blend	Sandstone Blend
Dark Brown	Texas Blend
Light Red	Walnut Brown



**Austin Block
+ Hardscape®**

7531 North IH-35 | Georgetown, Texas 78626
CALL US: (512) 930-1398 **EMAIL US:** sales@ausbh.com

ausbh.com