



Transformative Hardscapes Begin Here.  
Discover The Power of MiriBloc®.

**STANDARD PATIO BLOCK**



**Innovative Concrete Solutions For Inspired Spaces™**

In the ever-evolving field of landscaping and outdoor living design, innovative, durable, and aesthetically versatile solutions are paramount. Austin Block + Hardscape proudly presents MiriBloc®, a premier block solution engineered to meet the rigorous demands of today's complex projects. Designed with precision and crafted for excellence, MiriBloc® offers unmatched performance and versatility, setting a new standard in the industry.

MiriBloc® by Austin Block + Hardscape is not just a product but a comprehensive solution tailored for professionals who demand excellence in every project. Whether you're building seating, outdoor living areas, fire pits, or planters, discover how MiriBloc® can transform your designs with unparalleled durability, aesthetic versatility, and sustainable benefits.

## Key Benefits of MiriBloc® Concrete Block Over Other Building Materials

### DURABILITY AND LONGEVITY

MiriBloc® is engineered to withstand the harshest weather conditions, from intense UV rays and heavy rainfall to freezing temperatures and high winds. Its exceptional wear and tear resistance ensures that it remains structurally sound and visually appealing over the years, making it an ideal choice for outdoor areas requiring long-term reliability.

### LOW MAINTENANCE

MiriBloc® offers a breath of fresh air in outdoor materials. Its stain-resistant surface is easy to clean and maintain, making it ideal for recreational spaces where spills and dirt are common. Building professionals can rely on MiriBloc® to provide beautiful, hassle-free outdoor areas that require minimal effort to keep looking their best. With MiriBloc®, maintenance is a breeze, allowing you to focus on creating stunning outdoor spaces.

[CONTINUE TO NEXT PAGE](#)



**Austin Block  
+ Hardscape®**

7531 North IH-35 | Georgetown, Texas 78626  
**CALL US:** (512) 930-1398 **EMAIL US:** [sales@ausbh.com](mailto:sales@ausbh.com)

[ausbh.com](http://ausbh.com)

Revised May 28, 2024 | Page 1 of 3



# Transformative Hardscapes Begin Here. Discover The Power of MiriBloc®.

## STANDARD PATIO BLOCK

### Key Benefits of MiriBloc® Concrete Block Over Other Building Materials CONTINUED...

#### ENDURING AESTHETICS

MiriBloc® offers a versatile canvas with a wide range of colors and finishes to enhance any outdoor space. It allows landscape professionals to create customized, visually striking environments that meet clients' unique tastes. Whether modern, rustic, or traditional, MiriBloc® ensures high aesthetic appeal and harmony in every project, empowering you to bring your vision to life.

#### SAFETY

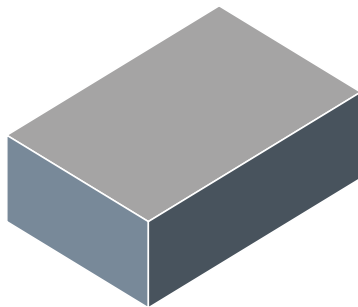
Safety is a paramount concern in outdoor living design, and MiriBloc® excels with its fire-resistant properties, making it a safe choice for areas involving open flames or grilling. Additionally, its non-slip surface reduces the risk of accidents, especially around pools and fire pits. Landscape architects, designers, and builders can confidently specify MiriBloc®, knowing it enhances the safety and usability of outdoor recreational areas.

#### COST-EFFECTIVENESS

MiriBloc® is an affordable option and provides excellent long-term value. Its durability reduces the need for frequent repairs or replacements, saving on long-term costs. Furthermore, its low maintenance requirements mean less time and money spent on upkeep. For landscape architects, designers, and builders, this cost-effectiveness translates into a high-quality, economical solution that delivers sustained performance and aesthetic appeal, making it a wise investment for any outdoor project.

## STANDARD PATIO BLOCK

#### SPECIFICATION



**Solid rectangular, single piece patio block system**

<b>DIMENSIONS</b>	<b>8 x 12 x 4 Inch</b>
<b>PALLET CONFIGURATION</b>	<b>6 Layers of 20 Pieces</b>
<b>FACE FEET PER UNIT</b>	<b>.33/SF</b>
<b>FACE FEET PER LAYER</b>	<b>6.6/SF</b>
<b>AREA PER PALLET</b>	<b>40/SF</b>
<b>UNITS PER PALLET</b>	<b>120 Pieces</b>
<b>WEIGHT PER UNIT</b>	<b>30 lbs.</b>
<b>WEIGHT PER LAYER</b>	<b>600 lbs.</b>
<b>WEIGHT PER PALLET</b>	<b>3,640 lbs.</b>

#### RECOMMENDED INSTALLATION APPLICATION

For a functional outdoor space, recommended installations include patio seating for comfortable relaxation, raised flower beds for organized gardening, and tree planters for added greenery. A fire pit offers warmth and a gathering spot, while outdoor kitchens provide convenient cooking and dining options.



**Austin Block  
+ Hardscape®**

7531 North IH-35 | Georgetown, Texas 78626  
**CALL US:** (512) 930-1398 **EMAIL US:** sales@ausbh.com

**ausbh.com**



# Transformative Hardscapes Begin Here. Discover The Power of MiriBloc®.

## STANDARD PATIO BLOCK

### AVAILABLE TEXTURES

Calle  
Paseo  
Redondo

### AVAILABLE FINISHES

Smooth  
Antique

### AVAILABLE COLORS

Austin Limestone	Moonlight Blend
Charcoal	Pewter
Cream	Sandstone
Crestwood Blend	Sandstone Blend
Dark Brown	Texas Blend
Light Red	Walnut Brown



**Austin Block**  
**+ Hardscape®**

7531 North IH-35 | Georgetown, Texas 78626  
**CALL US:** (512) 930-1398    **EMAIL US:** sales@ausbh.com

**ausbh.com**